



**Shri Ramdeobaba College of Engineering and Management  
Nagpur - 440013**

An Autonomous Institute Affiliated to Rashtrasant Tukadoji Maharaj Nagpur University, Nagpur

NAAC Accredited with 'A' Grade

[www.rknec.edu](http://www.rknec.edu)

**INTERNAL QUALITY ASSURANCE CELL (IQAC)**

---

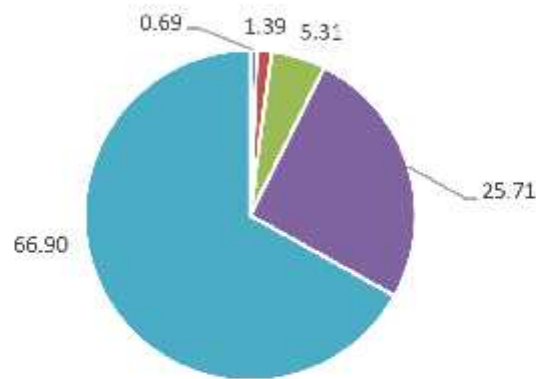
**STUDENT SATISFACTION  
SURVEY**

**(ASSESSMENT OF TEACHING  
LEARNING PROCESS)**

**ANALYSIS**

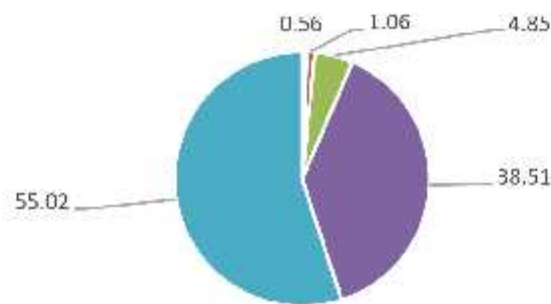
**2018-19**

### Q. 1. Degree of syllabus coverage in the class



■ 0 - Below 30% ■ 1 - 30 to 54% ■ 2 - 55 to 69% ■ 3 - 70 to 84% ■ 4 - 85 to 100%

### Q. 2. Teacher's preparedness for delivery of courses in the classes



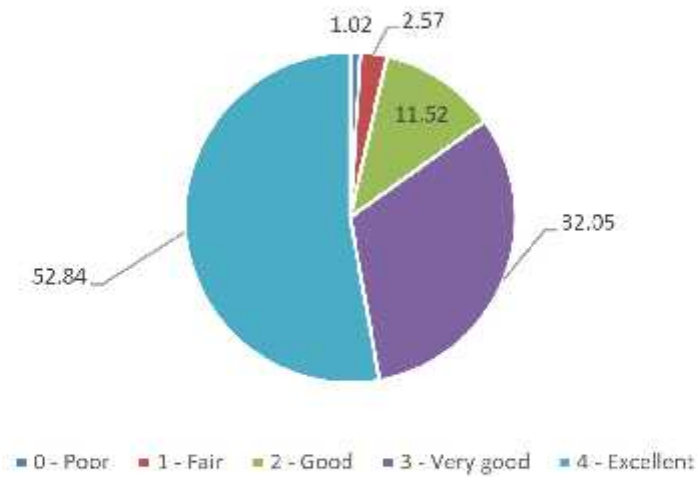
■ 0 - Won't teach at all ■ 1 - Indifferently ■ 2 - Poorly ■ 3 - Satisfactorily ■ 4 - Thoroughly

### Q. 3. Communication skills of teachers

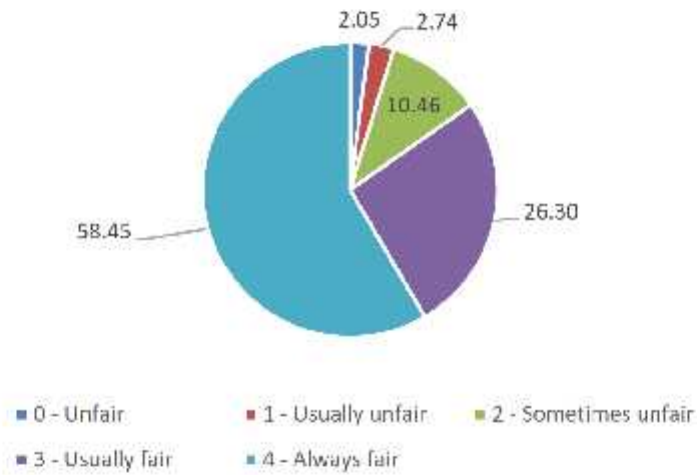


■ 0 - Very poor communication ■ 1 - Generally ineffective  
 ■ 2 - Just satisfactorily ■ 3 - Sometimes effective  
 ■ 4 - Always effective

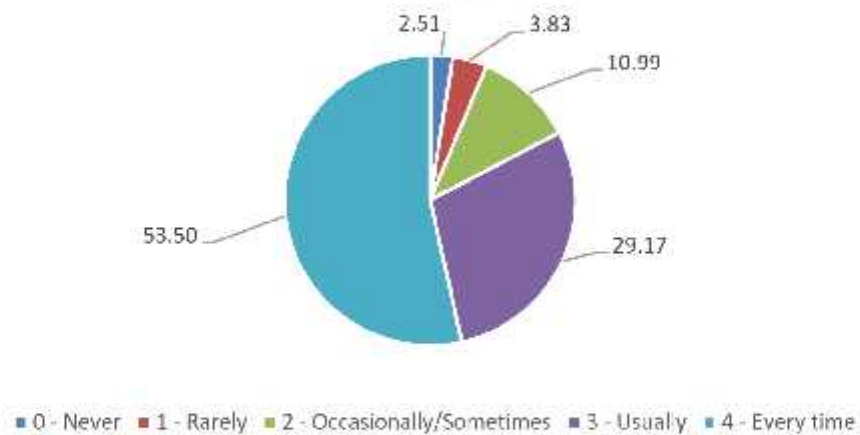
Q. 4. Teachers approach for teaching the courses



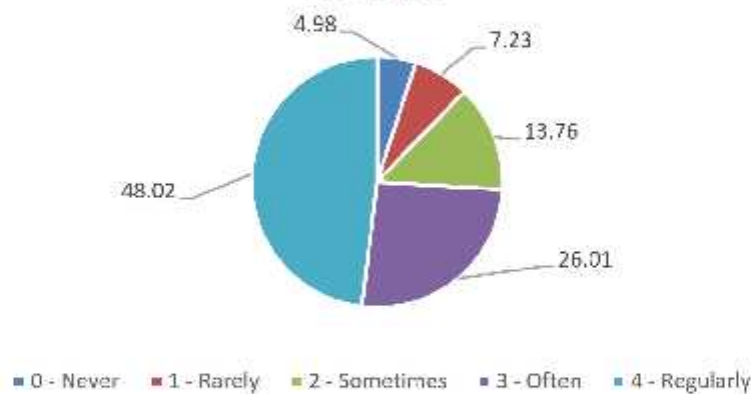
Q. 5. Unbiased approach in evaluation process



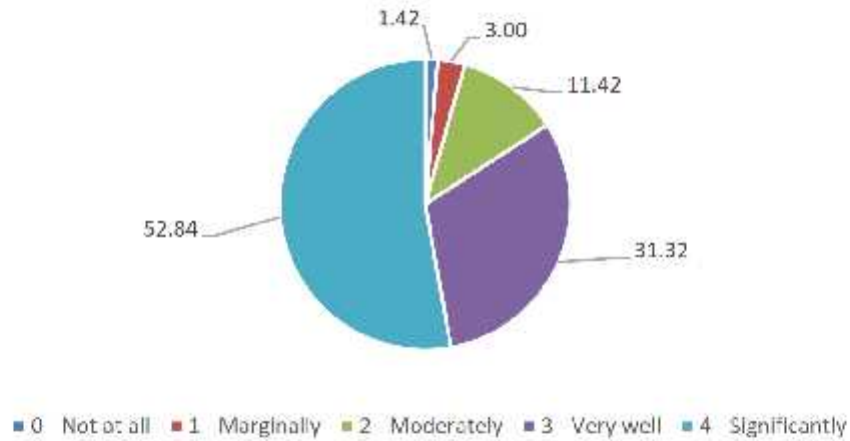
Q. 6. Performance in the assignments given were discussed with the students



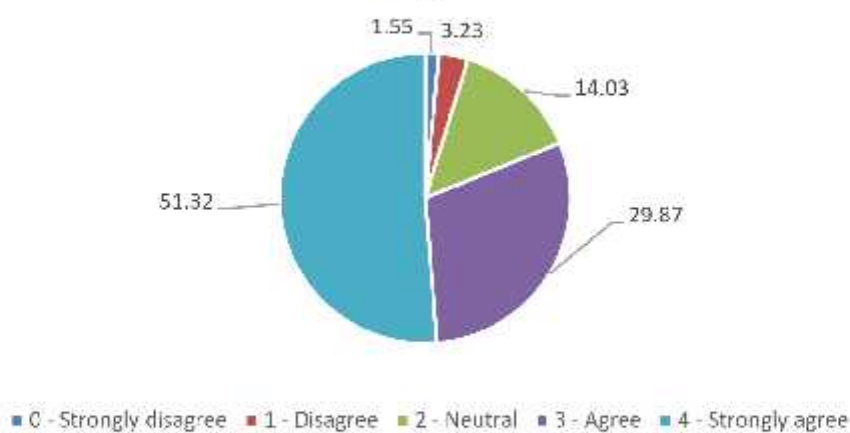
Q. 7. Opportunities provided for internship, student exchange, field visit for students



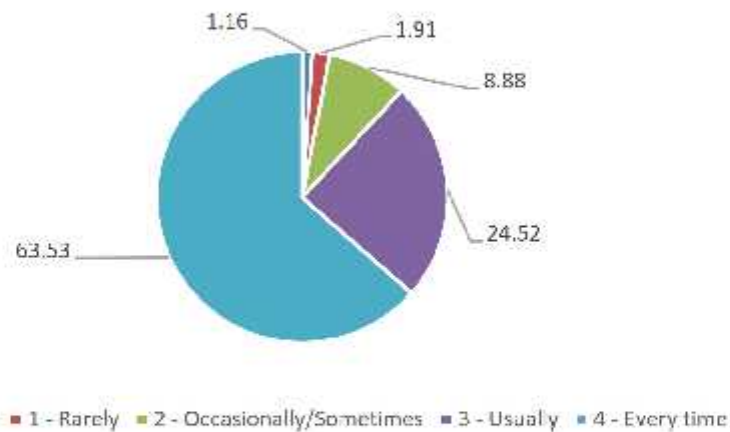
Q. 8. Effectiveness of teaching and mentoring process



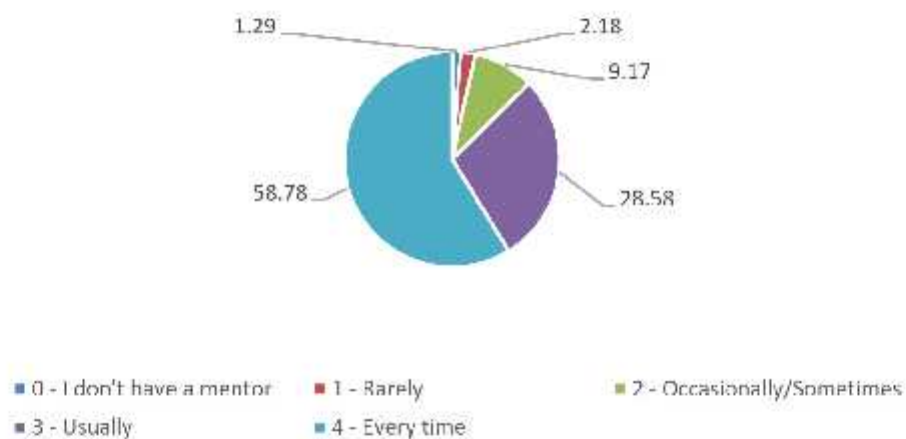
Q. 9. Multiple opportunities provided to learn and grow



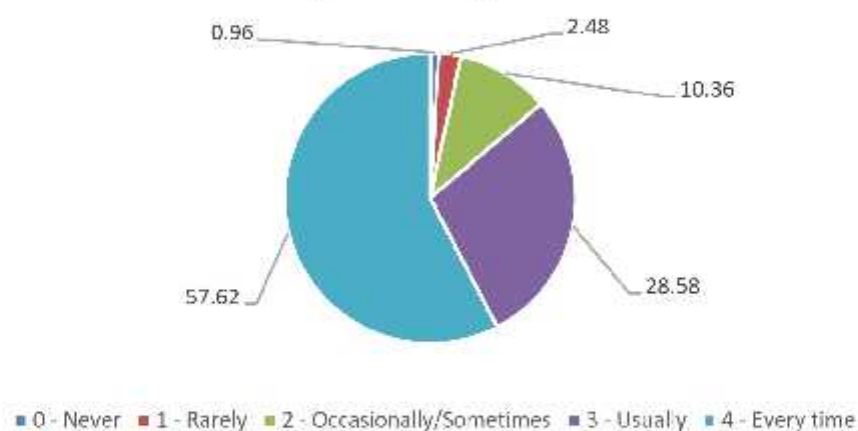
Q. 10. Are the course outcomes, programme outcomes and required skill sets discussed



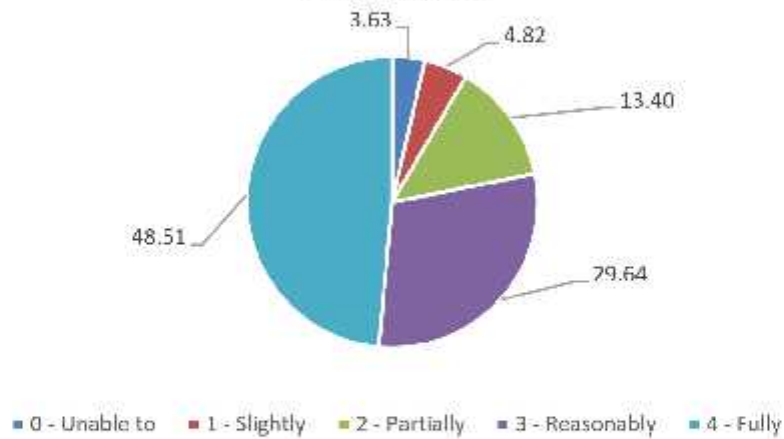
Q. 11. Necessary follow-up of the assigned tasks is done



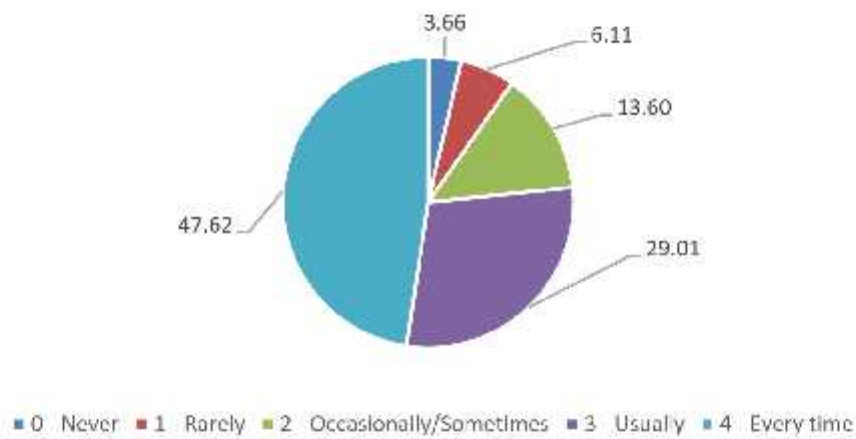
Q. 12. Are the concepts explained with suitable examples and applications



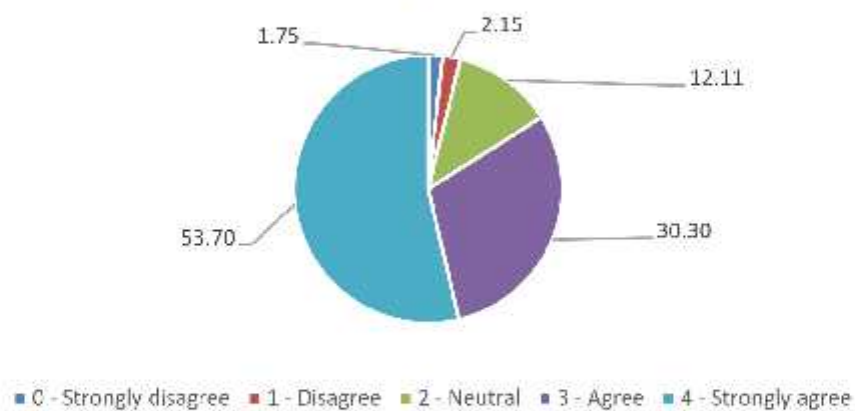
Q. 13. Are your strengths identified and encouraged



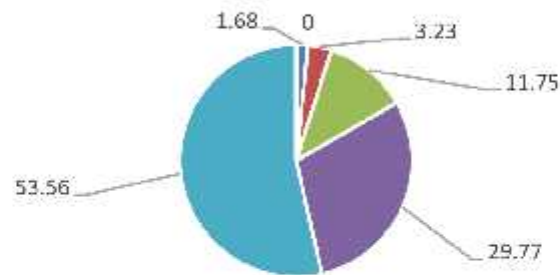
Q. 14. Are your weaknesses identified and help extended to overcome them



Q. 15. Degree of your involvement in the monitoring, review and continuous quality improvement of the teaching learning process of the institute

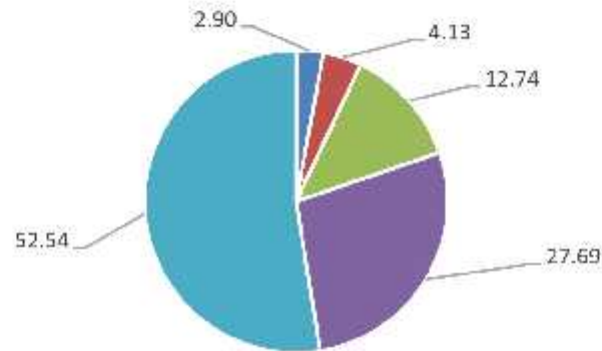


Q. 16. Usage of student centric methods such as experimental learning, participative learning and problem solving methodologies for enhancing learning experience



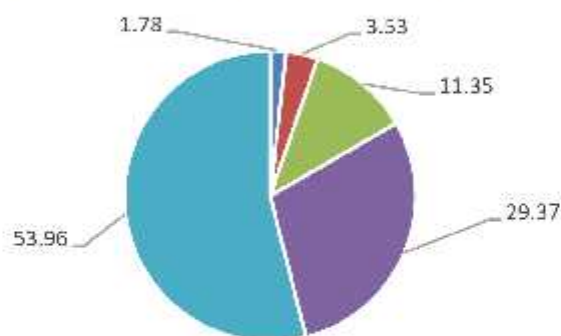
■ 0 - Not at all      ■ 1 - Very little      ■ 2 - Some what  
 ■ 3 - Moderate      ■ 4 - To a great extent

Q. 17. Encouragement for participation in curricular, co-curricular and extracurricular activities



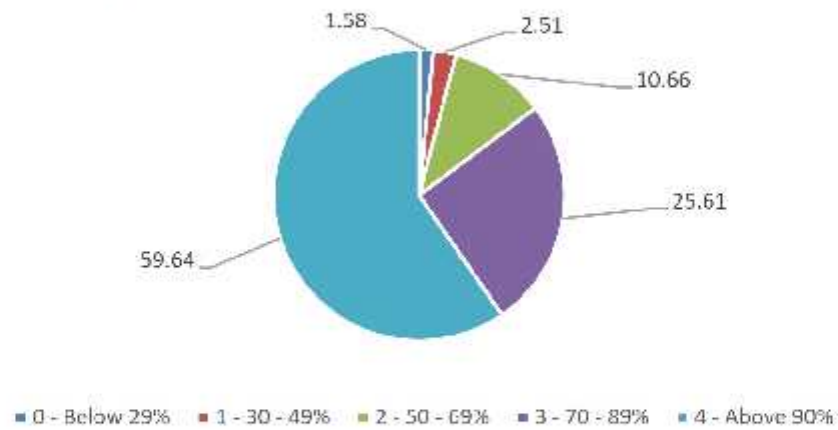
■ 0 Strongly disagree   ■ 1 Disagree   ■ 2 Neutral   ■ 3 Agree   ■ 4 Strongly agree

Q. 18. Efforts to inculcate employability, life skills, soft skills and value based learning

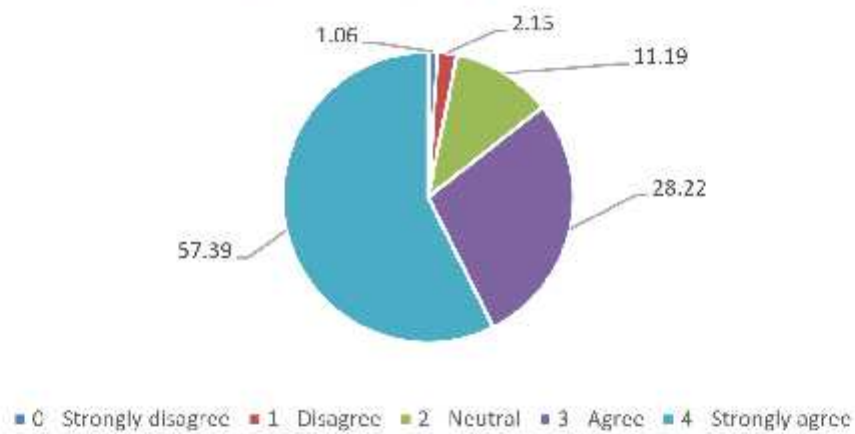


■ 0 - Not at all   ■ 1 - Very little   ■ 2 - Some what   ■ 3 - Moderate   ■ 4 - To a great extent

Q. 19. Degree of usage of ICT tools such as LCD projector, Multimedia etc. while teaching



Q. 20. The overall quality of teaching-learning process in your institute



*M. Hasamnis*

**Dr. (Mrs.) Meghana A. Hasamnis**  
Member Secretary, IQAC